

Welcome

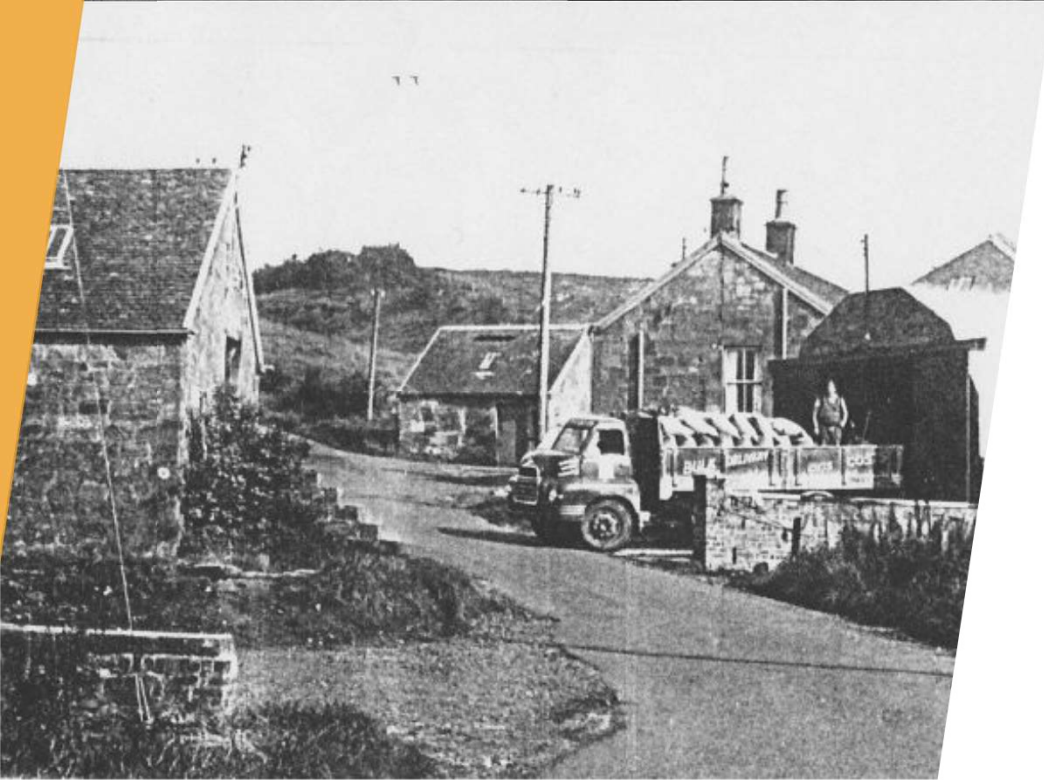
The logo for Galloway & Macleod features the company name in a bold, italicized, sans-serif font. The text is centered within a light orange oval that has a darker orange border. The background of the slide is white with abstract geometric shapes in shades of orange and brown on the right side.

***GALLOWAY
& MACLEOD***

GRAIN MILLERS AND AGRICULTURAL MERCHANTS
EXPERIENCE. THE DIFFERENCE

The background features abstract geometric shapes in shades of orange and brown. On the left, a solid orange trapezoidal shape points towards the center. On the right, a complex arrangement of overlapping, semi-transparent triangles in various shades of brown and orange creates a layered, geometric effect. The central text 'Who?' is positioned in the white space between these shapes.

Who?



Animal Feed Manufacturer

Established 1872

TEAM G&M



The background features abstract geometric shapes in shades of orange and brown. On the left, a solid orange trapezoidal shape points towards the center. On the right, a complex arrangement of overlapping, semi-transparent triangles in various shades of brown and orange creates a layered, geometric effect. The central area is a plain white space.

What?



**Fertiliser
21%**



Feed, Minerals, Buckets 67%

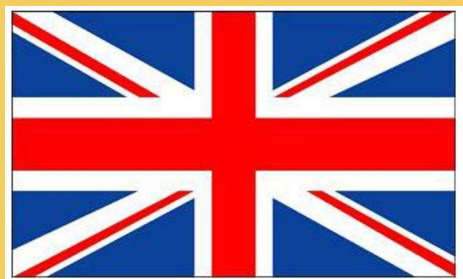




The background features abstract geometric shapes in shades of orange and brown. On the left, a solid orange trapezoidal shape points towards the center. On the right, a complex arrangement of overlapping, semi-transparent triangles in various shades of brown and orange creates a layered, architectural effect. The central area is a plain white space where the text is located.

Where?





The background features abstract geometric shapes in shades of orange and brown. On the left, a solid orange trapezoidal shape extends from the top edge. On the right, a complex composition of overlapping, semi-transparent triangles and polygons in various tones of brown and orange is visible. The central area is a plain white space.

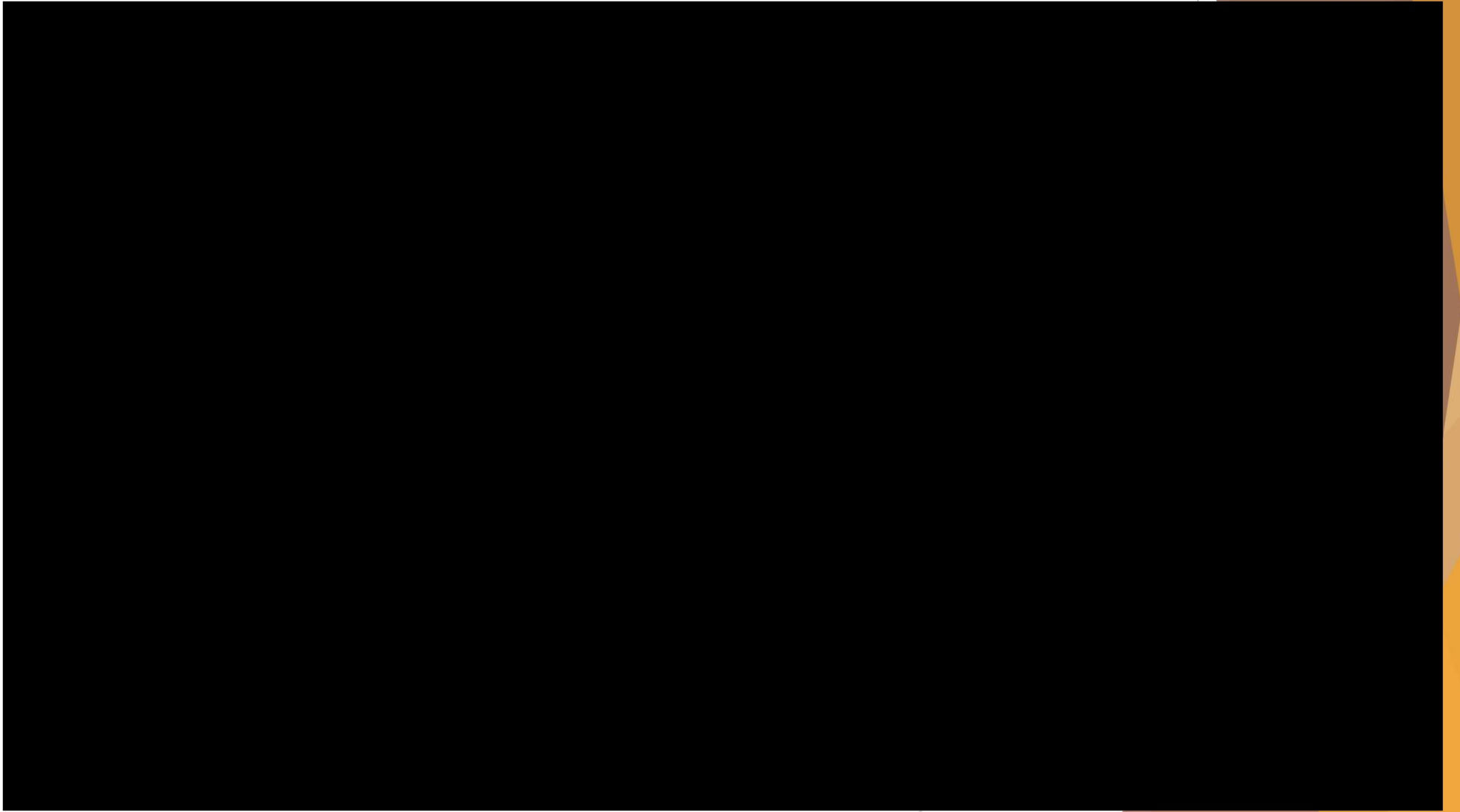
How?

Experience. the difference

Values

- **Excellence**
- **Sustainability**
- **Integrity**
- **Partnership**

AGRI



EQUINE



The background features abstract geometric shapes in shades of orange and brown. On the left, a solid orange trapezoidal shape points towards the center. On the right, a complex arrangement of overlapping, semi-transparent triangles and polygons in various shades of brown and orange creates a layered, dynamic effect.

Employee Ownership

***GALLOWAY
& MACLEOD***



EO -2010





Experience. the difference
Customer Focused -
Results driven

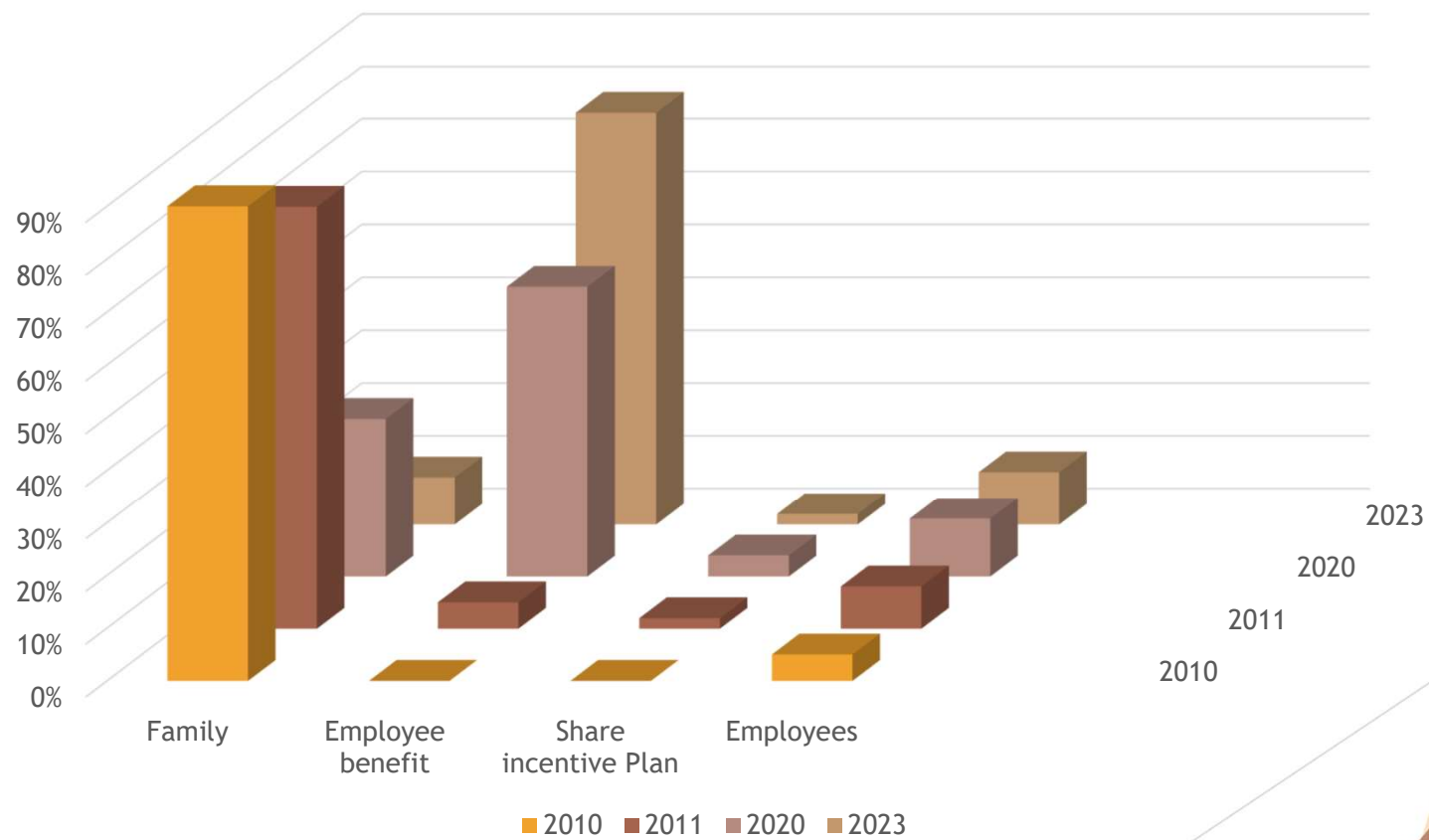
Present day vs 2010 comparison

	2010	2023
Turnover £	£ 10,900,000	20,200,000
Gross Profit %	14.48%	13.12%
Staff Numbers	31	36

Changes

Tonnage	2010	2023	% increase /decrease
Own manufacture	9,990	18,693	87%
Compund Feed	12,300	7,700	-37%
Fertiliser	15,500	8,700	-44%

Ownership



Investment 2010

£25/month

£300 = £240 (Tax Relief)=55 shares @ £5.46

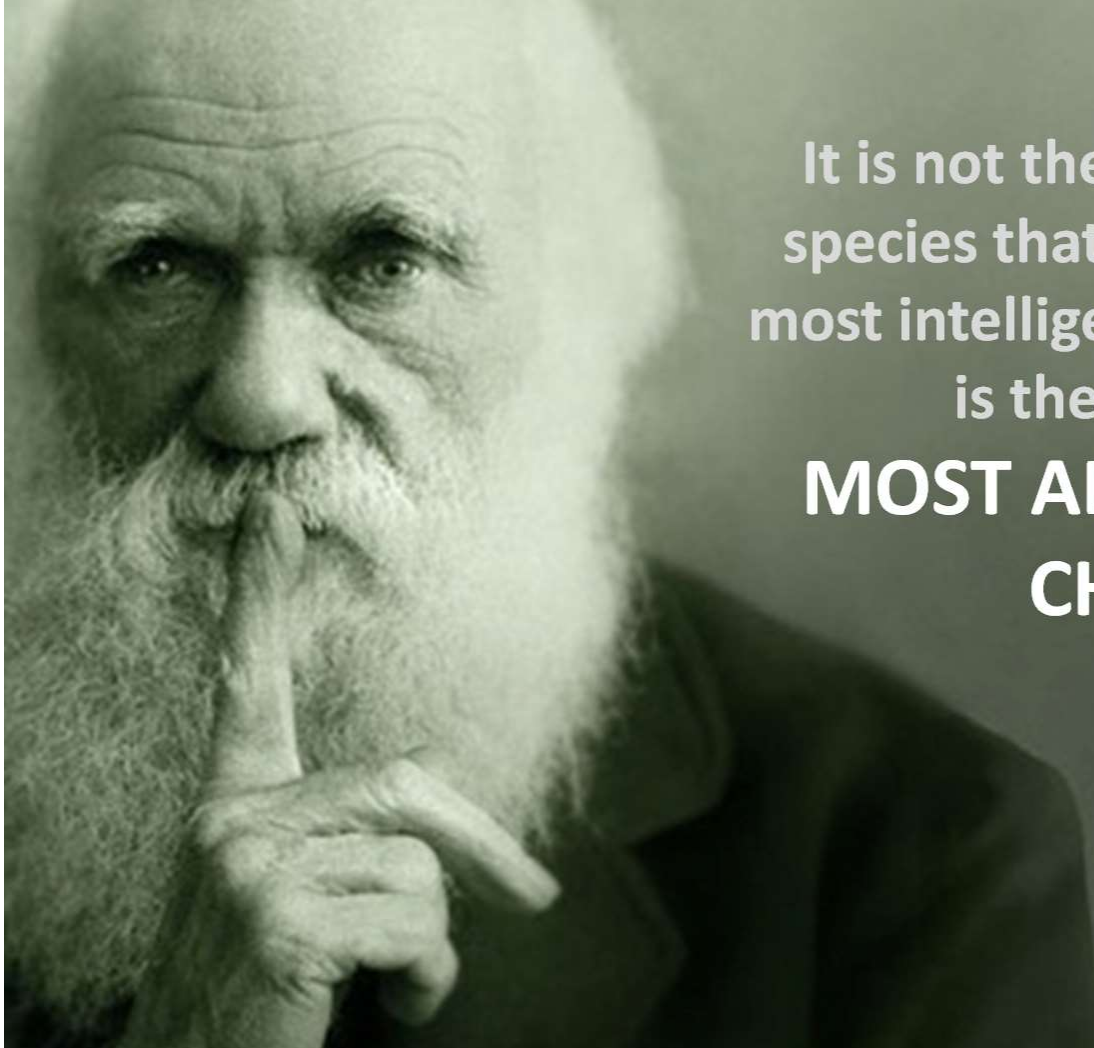
£25 monthly for following 13 year

Spend = £3,360

Value after 13 years = £7,270

Gain = £3,900

Conclusion



It is not the strongest of the
species that survives, nor the
most intelligent that survives. It
is the one that is
**MOST ADAPTABLE TO
CHANGE**

The background features abstract geometric shapes in shades of orange and brown. On the left, a solid orange trapezoidal shape extends from the top to the bottom. On the right, a complex arrangement of overlapping, semi-transparent triangles and polygons in various shades of brown and orange creates a layered, geometric effect. The central area is a plain white space.

Questions?